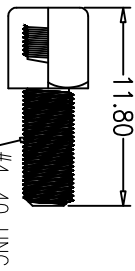
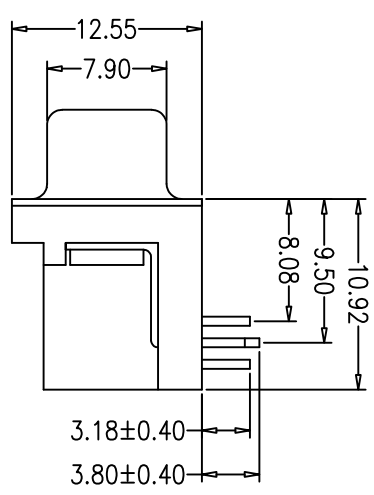
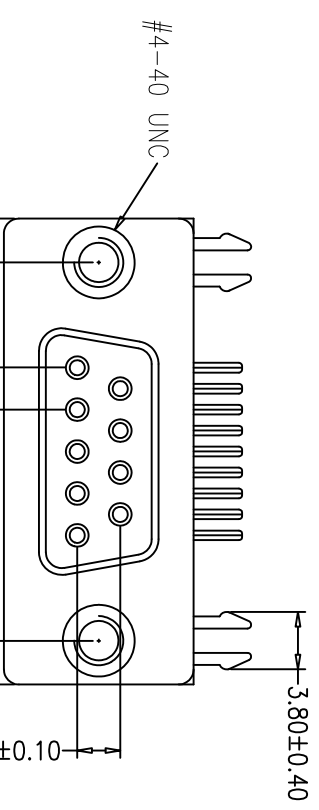
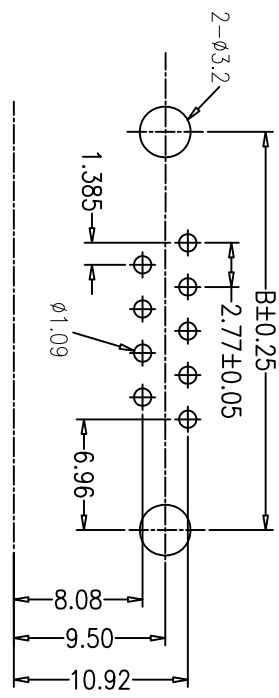
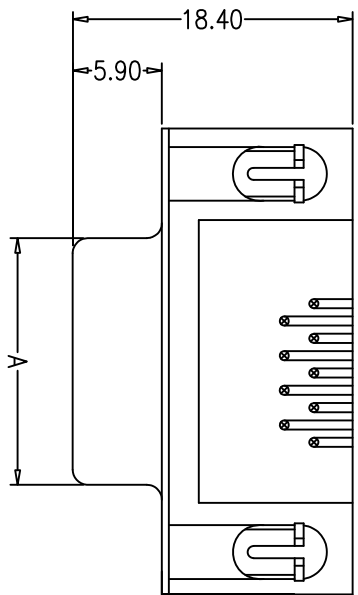


HSE

NOTES:

Rated Current: 5.0AMPS
 Contact Resistance: 20mΩ max
 Withstand Voltage: 500V AC/Minute
 Insulation Resistance: 1000MΩ min at 500V DC
 Operation Temperature: -55°C to +105°C

Contact Material: Brass
 Contact Plating: Au or Sn Over Ni
 Insulator Material: PBT+30%G.F UL94V-0
 Sheet: Steel, Ni Plated
 Revit: Brass,Tin Over Ni Plated
 Screw: Brass,Ni Plated



Ordering Information

BT6223 ** F * B A 2 B40

NO. OF PINS CONTACT PLATING INSULATOR COLOR Insulation & Polding SERIES NO.
 09152537P F=Gold Flash/Tin B=Black A: PBT+Tty 2=W/Screw Nut(付屬品)

No. of Positions	DIM "A"	DIM "B"	DIM "C"
9	16.30	24.99	30.80
15	24.60	33.30	39.20
25	38.30	47.04	53.10
37	54.80	63.50	69.34

OPERATION	DRAW	SCALE
X.X ±0.40	Fanyijun	-
X.XX ±0.30	DESIGN	UNIT mm
X.XXX ±0.15	CHECK	SIZE A4
Angle ± 3'	APPROVE	SHEET 1/1
DIM TOL	CK	PROJ.



REV	DATE	MODIFICATION DESCRIPTION	CHANGE	APPROVE
A0	09/01/12	NEW		

1	2	3	4	5	6	7	8	9	10
PART NO. BT6223**F*BA2B40					TITLE: D-Sub Female connector 8.08mm Footprint R/A Type				

HSF

Recommended P.C.B Layout(Top Side)
(PCB BOARD TOLERANCE±0.05)

SPECIFICATION:

- Current Rating: 5AMPS
- Withstand Voltage: 500V AC/Minute
- Insulation Resistance: 5000MΩ Min At 500V DC
- Operation Temperature: -55°C ~ +105°C

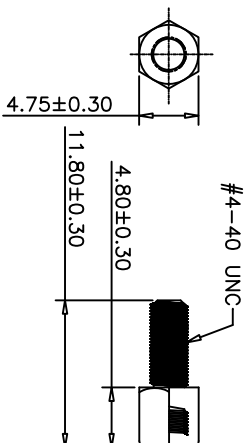
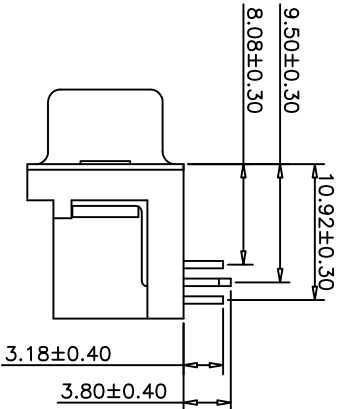
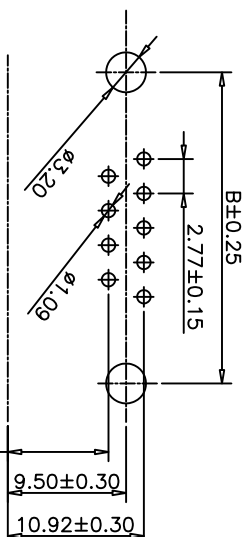
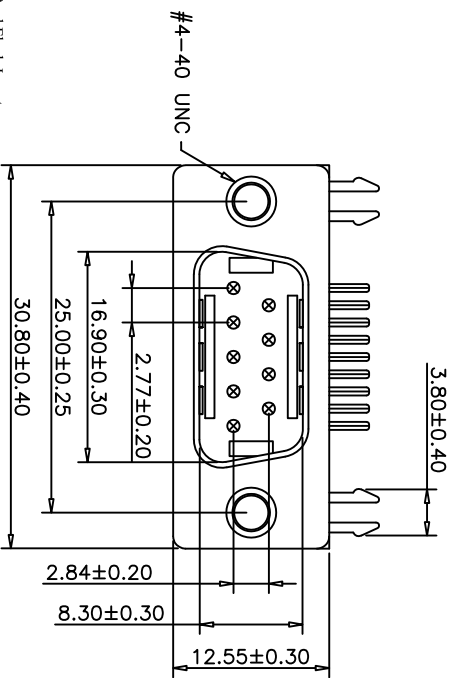
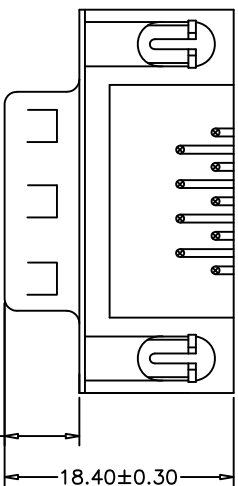
MATERIAL:

- Contact Material: Brass
- Contact Plating: Au Over Tin Or Gold-Plated Or Tin-Plated
- Insulator Material: PBT+30%Glass Fiber(UL94V-O)
- Sheel: Steel,Nickel Plated

Ordering Information

BT6223 09 M * B A 2 B40

No. of Pins 09=09Pin Contact Plating F=Gold Flash/Tin Insulator Color B:Black Insulation & Packing A: PBT+Tray Series No. 2=W/Screw Nut And Flush Insert



Screw Nut

REV	DATE	MODIFICATION DESCRIPTION	CHANGE	APPROVE
A0	09/04/12	NEW		

OPERATION	DRAW	Qiuzhirong	09/04/12
X.X	DESIGN		
X.XX	CHECK	Yalin	
X.XXX	APPROVE	CK	
Angle			
± 3'			
DIM			
TOL			

SCALE	UNIT	SIZE	SHEET	PART NO.	TITLE:
-	mm	A4	1/1	BT622309M*BA2B40	D-SUB 9Pin Male With #4-40UNC Screw Nuts And Flush Insert



1 2 3 4 5 6 7 8 9 10