

Recommended P.C.B Layout(Top Side)  
(PCB BOARD TOLERANCE±0.05)

**NOTES:**

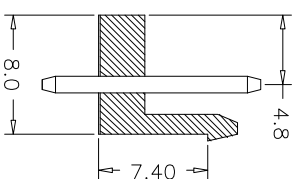
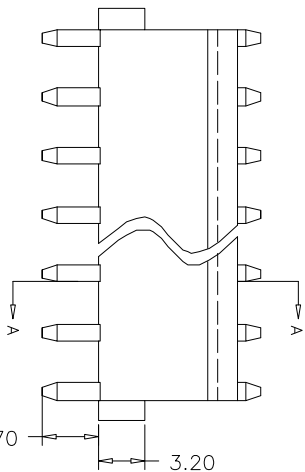
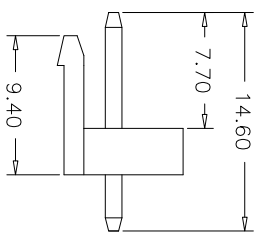
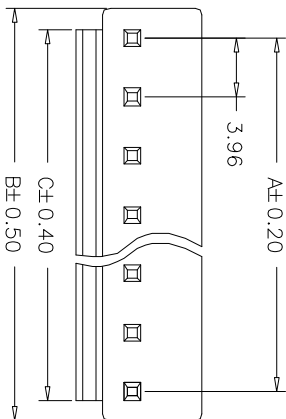
Current Rating:7.0A,AC/DC  
Voltage rating:250V AC/DC  
Insulation Resistance:1000M<sup>2</sup>Min  
Withstand Voltage:1500V AC/minute  
Operation Temperature:-25℃ to +85℃  
Applicable Pcbard thickness:0.63"(1.6mm)  
Contact Resistance:Initial Value/10m<sup>2</sup>max After environmental testing/20m<sup>2</sup>Max

Contact Material:Brass  
Contact plating:Tin-plated  
Insulator Material: Nylon66 (UL94V-2 or 94V-0)

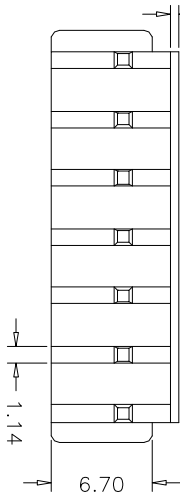
## Ordering Information

BT3963 S \* \* W 0 1 A02

Terminal Shape No.of Pins Color Packing  
S:Water 180° 02P-12P B:Black 0:PE Bag  
R:Water 90° W:White 1:Tray  
E:Beige 2:Tube  
3:Tape&Reel

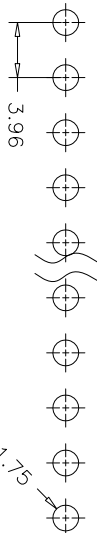


Section:A-A



### Dimensional & Ordering Information

Circuit	Part No.	Dimension		
		A	B	C
02	BT3963S02W01	3.96	8.00	5.18
03	BT3963S03W01	7.92	11.96	9.14
04	BT3963S04W01	11.88	15.92	13.10
05	BT3963S05W01	15.84	19.88	17.06
06	BT3963S06W01	19.80	23.84	21.02
07	BT3963S07W01	23.76	27.80	24.98
08	BT3963S08W01	27.72	31.76	28.94
09	BT3963S09W01	31.68	35.72	32.90
10	BT3963S10W01	35.64	39.68	36.86
11	BT3963S11W01	39.60	43.64	40.82
12	BT3963S12W01	43.56	47.60	44.78



OPERATION	±0.40	±0.25	±0.15	± 3°	APPROVE
XX					
XXX					
XXXX					
Angle					
DIM					



BMA TECHNOLOGIES LTD

REV	DATE	MODIFICATION DESCRIPTION	CHANGE	APPROVE	OPERATION	DRAW	SCALE	PART NO.	TITLE:
A0	09/01/19	NEW			XX	Zhengyali	mm	BT3963S**W01A02	Wafer VH3.96 180°
					XXX	DESIGN	A4		
					XXXX	CHECK			
					Angle				
					DIM				