

**Specification:**

- Current Rating: 3.0AMP
- Contact Resistance: 20mΩ Max
- Withstand Voltage: 500V AC/DC
- Insulation Resistance: 1000MΩ Min
- Operation Temperature: -40°C ~ +105°C

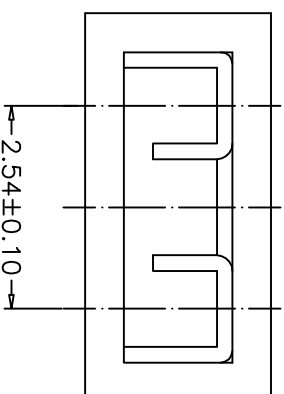
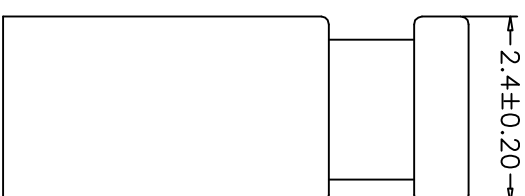
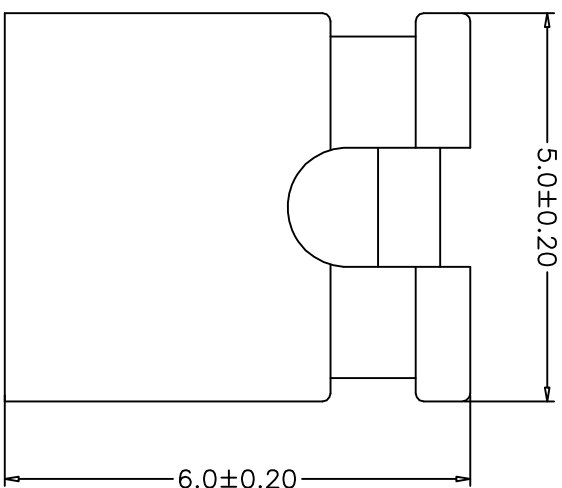
**Material:**

- Contact Material: Brass
- Contact Plating: Gold Flash Or Tin Plated
- Insulator Material: PBT(UL94V-O)

**Ordering Information**

BT3710 60 01 0 \* \* A03

H.S.G Height 60=5.0mm    No.of Pin 01=1Pin    Contact Shape 0=Open    Contact Plating U=Gold Flash    Insulation Color B=Black  
 S=Tin Plated    R=Red  
 F=Gold Plated/Tin



|           |          |                          |         |            |          |          |                                |
|-----------|----------|--------------------------|---------|------------|----------|----------|--------------------------------|
| OPERATION | X.X      | ±0.40                    | DRAW    | Zhangyalin | 09/01/16 | SCALE    | -                              |
|           | X.XX     | ±0.25                    | DESIGN  |            |          | UNIT     | mm                             |
|           | X.XXX    | ±0.15                    | CHECK   | Shine      |          | SIZE     | A4                             |
| Angle     |          | ± 3'                     | APPROVE | CK         |          | SHEET    | 1/1                            |
| DIM       |          |                          |         |            |          | PROJ.    |                                |
| REV       | DATE     | MODIFICATION DESCRIPTION | CHANGE  | APPROVE    |          | PART NO. | BT371060010**A03               |
| A0        | 09/01/16 | NEW                      |         |            |          | TITLE:   | 2.54mm Pitch Mini Jump H=6.0mm |

