

HSHF

Recommended P.C.B Layout (Top Side)
(PCB BOARD TOLERANCE±0.05)

Specifications:

- Current Rating: 1AMP
- Contact Resistance: 20mΩ Max
- Withstanding Voltage: 1000V AC Min
- Insulation Resistance: 1000MΩ Min
- Operation Temperature: -40°C ~ +105°C

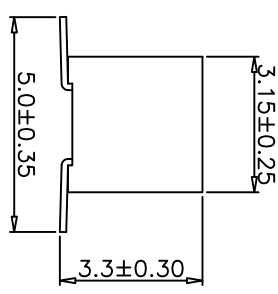
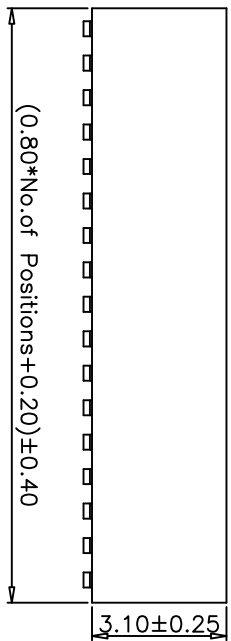
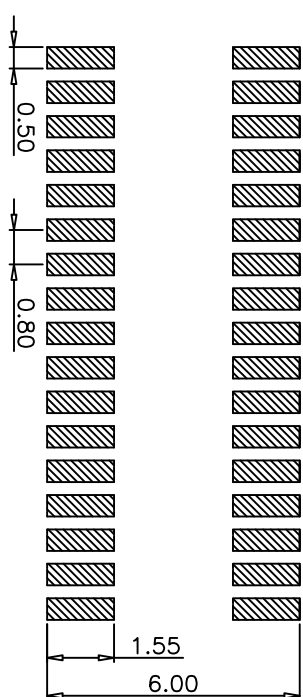
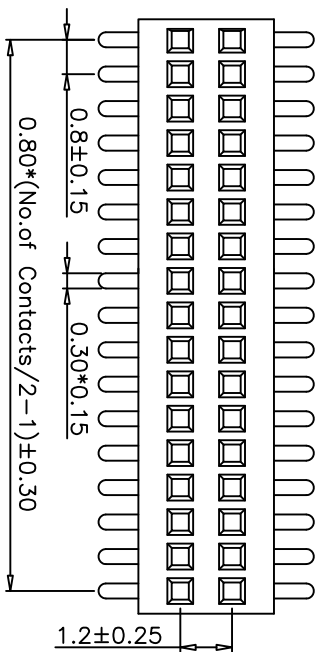
Material:

- Insulator Material: LCP (UL94V-0)
- Contact Material: Brass
- Contact plating: Gold Flash Over Nickel

Ordering Information

BT2631 2 ** * N 3 A43

No. of Pins Contact Plating Insulation & Packing 3=SMT
 04=4Pin U=Gold Flash N=LCP+Tube
 ... X=10u"Gold
 98=98Pin A1=100Pin



REV	DATE	MODIFICATION DESCRIPTION	CHANGE	APPROVE
A0	09/04/29	NEW		

OPERATION	DRAW	SCALE
X.X	Qiuzhitong	-
±0.40		
X.XX	DESIGN	UNIT
±0.25		mm
X.XXX	CHECK	SIZE
±0.15	Yalin	A4
Angle	APPROVE	SHEET
± 5'	CK	1/1
DIM	TOL	PROJ.

BMA TECHNOLOGIES LTD
 TECHNICAL OFFICES LTD
 PART NO. BT26312***N5A43
 TITLE: 0.8mm Female Header Dual Row SMT Type