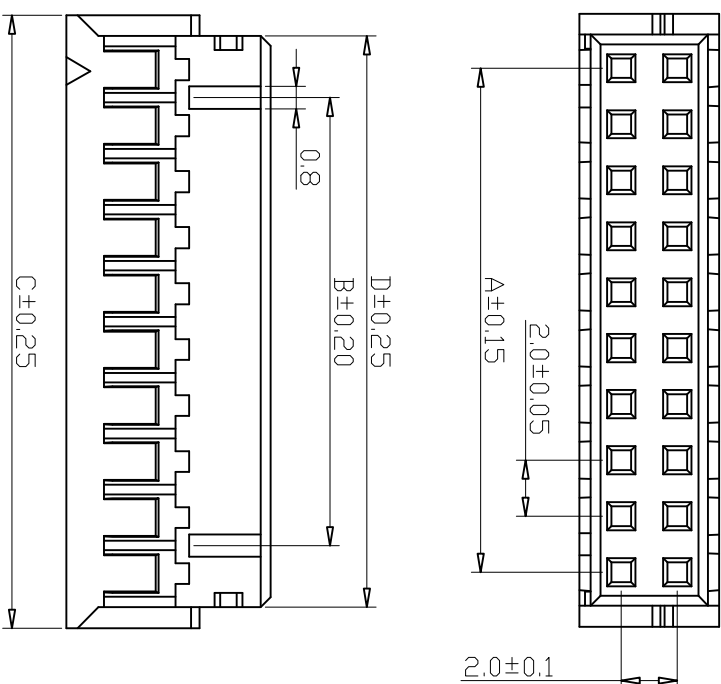
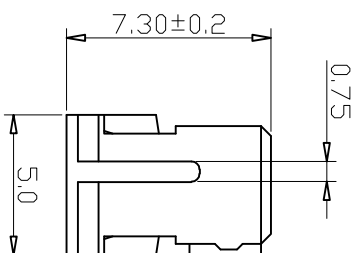


NOTES:

- Rated Current: 2.0AMP
- Rated Voltage: 250V AC,DC
- Contact Resistance: 20m\U+2126 max
- Insulation Resistance: 1000M\U+2126 min
- Withstanding Voltage: 800V AC/Minute
- Operation Temperature: -25°C to +85°C
- Insulator Material: Nylon66,UL94V-0
- Color: White



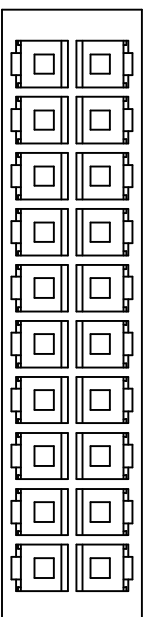
Ordering Information

BT2002 H ** W 01 A19

No. Of Pins
04~32Pin

Color
E=Beige
W=White

Packing
0:PE Bag
1:Tray
2:Tube
3:Tape&Reel



Part No.	Dimensions			
	A	B	C	D
BT2002H04W01	2.00	0.00	5.90	4.40
BT2002H06W01	4.00	2.00	7.90	6.40
BT2002H08W01	6.00	4.00	9.90	8.40
BT2002H10W01	8.00	6.00	11.90	10.40
BT2002H12W01	10.00	8.00	13.90	12.40
BT2002H14W01	12.00	10.00	15.90	14.40
BT2002H16W01	14.00	12.00	17.90	16.40
BT2002H18W01	16.00	14.00	19.90	18.40
BT2002H20W01	18.00	16.00	21.90	20.40
BT2002H22W01	20.00	18.00	23.90	22.40
BT2002H24W01	22.00	20.00	25.90	24.40
BT2002H26W01	24.00	22.00	27.90	26.40
BT2002H28W01	26.00	24.00	29.90	28.40
BT2002H30W01	28.00	26.00	31.90	30.40
BT2002H32W01	30.00	28.00	33.90	32.40

REV	DATE	MODIFICATION DESCRIPTION	CHANGE	APPROVE	OPERATION		DRAW	Heming	09/02/18	SCALE		SHEET	PART NO.	TITLE:	2.00mm Pitch Housing
					XX	±0.40				UNIT	mm				
A0	09/02/18	NEW			XXX	±0.25	DESIGN				A4	1/1	BT2002H**W01A19		
					Angle	±0.15	CHECK	Fanyijun							
					DWG	± 3'	APPROVE	B111							

