

Recommended P.C.B Layout(Top Side)
(PCB BOARD TOLERANCE±0.05)

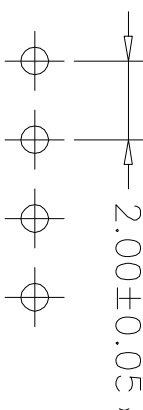
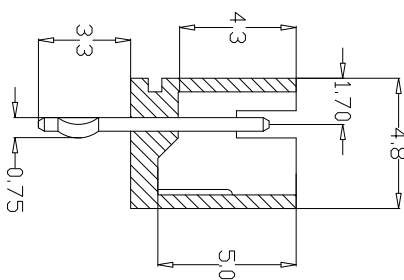
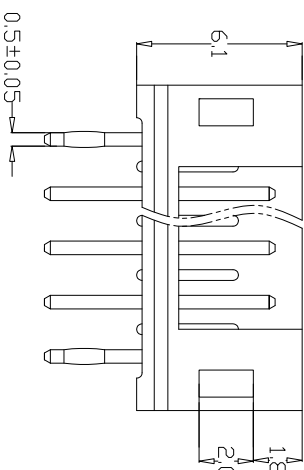
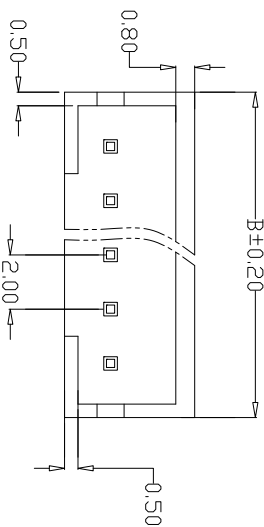
- NOTES:
- Rated Current: 2.0AMP
 - Rated Voltage:250V AC,DC
 - Contact Resistance:20mΩ max
 - Withstand Voltage:800V AC/minute
 - Insulation Resistance:1000MΩ min
 - Operation Temperature:-25℃ to +85℃
(Including temperature rise in applying electrical current)
 - Contact resistance:initial Value/10mΩmax
After environmental Testing/20mΩ

- Contact Material:Brass
- Contact Plating:Au or Sn Over Ni
- Insulator Material: Nylon 66,(UL94V-2)
- Applicable PC board thickness:
0.030"-0.063"(0.8mm-1.6mm)

Ordering Information

BT2001 S ** * 1 A02

TERMINAL SHAPE No.of pins Color Packing
S:Wafer 180° 02P-16P W:White OPE Bag
R:Wafer 90° E:Beige 1:Tray
M:Wafer SMT R:Red 2:Tube
Z:Wafer 90° SMT 3:1Tape&Reel



Dimensional & Ordering Information

PART NO.	Dimensions	
	A	B
BT2001S02XX1	2.00	6.00
BT2001S03XX1	4.00	8.00
BT2001S04XX1	6.00	10.00
BT2001S05XX1	8.00	12.00
BT2001S06XX1	10.00	14.00
BT2001S07XX1	12.00	16.00
BT2001S08XX1	14.00	18.00
BT2001S09XX1	16.00	20.00
BT2001S10XX1	18.00	22.00
BT2001S11XX1	20.00	24.00
BT2001S12XX1	22.00	26.00
BT2001S13XX1	24.00	28.00
BT2001S14XX1	26.00	30.00
BT2001S15XX1	28.00	32.00
BT2001S16XX1	30.00	34.00

REV	DATE	MODIFICATION DESCRIPTION	CHANGE	APPROVE	OPERATION	DRAW	SCALE	PART NO.
A0	09/01/19	NEW			XX ±0.40	DESIGN	mm	BT2001S**W01A02
					XXX ±0.25	CHECK	A4	WAFFER P2.00 180°
					X.XXX ±0.15			
					Angle ± 3'			
					DM TOL			



H
G
F
E
D
C
B
A

1 2 3 4 5 6 7 8 9 10