

HSSF

SPECIFICATIONS

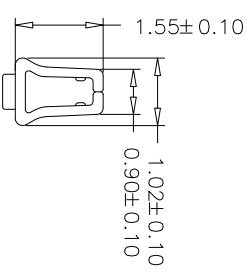
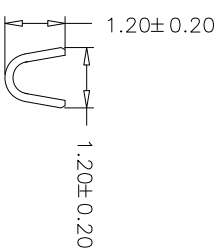
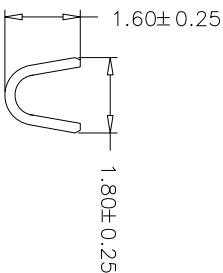
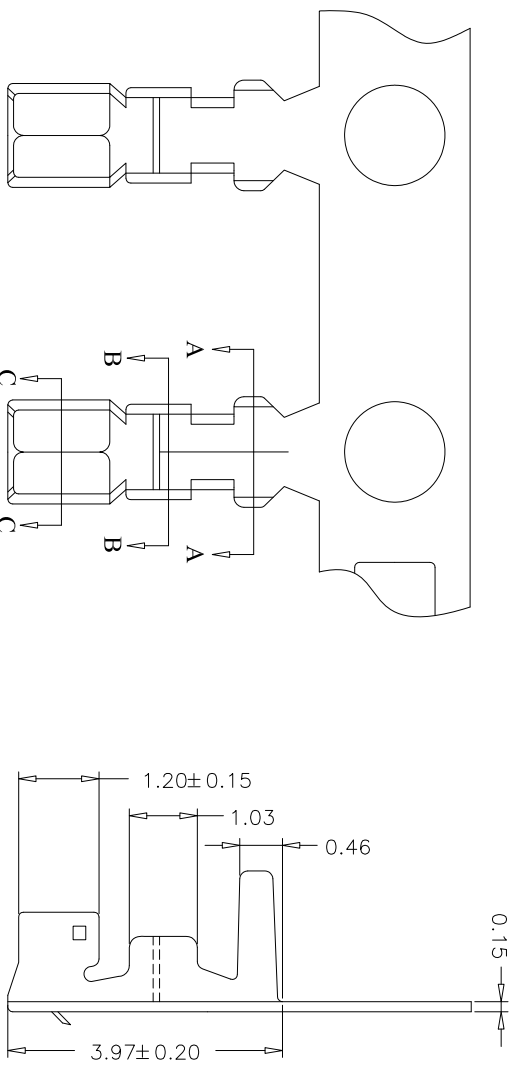
- Applicable Wire:28AWG—32AWG.
- Material: Phosphor Bronze
- Finish: Gold /Tin Plated.

Ordering Information

BT1501 TX S 01 A02

Material:
P:Phosphor Bronze
B:Brass

Contact Plated
S=Tin Plated
N=Nickel Plated



REV	DATE	MODIFICATION DESCRIPTION	CHANGE	APPROVE	OPERATION		DRAW	Zhangyalin	09/01/19	SCALE		PART NO.	BT1501TXS01A02
					XX	±0.40				UNIT	mm		
A0	09/01/19	NEW			XXX	±0.25	DESIGN			SIZE	A4		
					Xxxx	±0.15	CHECK	Fanyijun					
					Angle	± 3'	APPROVE	B111		TITLE:			Pitch 1.50 Terminal
					DIM	TOL							

