

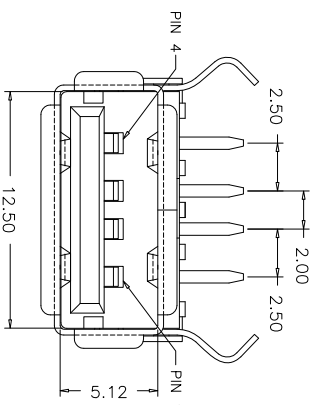
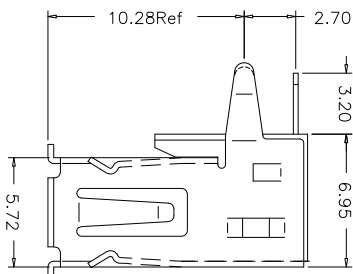
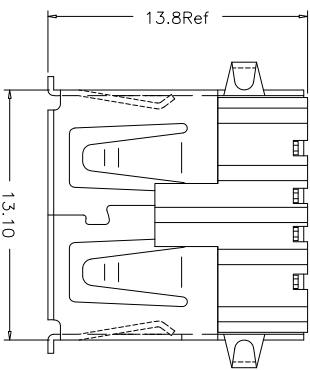
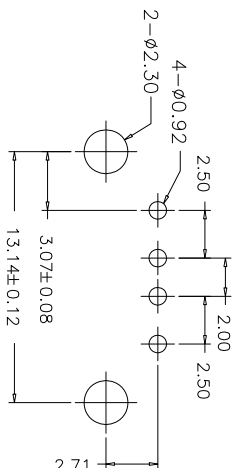
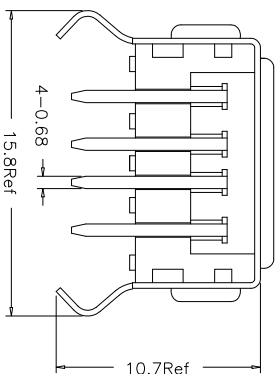
**Specification:**  
 Voltage Rating: 30V AC (rms).  
 Current Rating: 1.5Amp at 30V AC.  
 Dielectric Withstanding Voltage: AC 500V.  
 Insulation Resistance: 1000M ohm Min.  
 Contact Resistance: 30m ohm Max.  
 Operating Temperature: -25° C~+85° C

**Material:**  
 Insulator: PBT+30% Glass Fiber or LCP (UL94V-0).  
 Contact: Copper Alloy.  
 Contact Plated : Tin/Lead in Soldering Area Gold Plated in Contact Area, Nickel all Over 100u" Min.  
 Outer Shell: Copper Alloy, Nickel or Tin Plated.  
 Color: Black / White

## Ordering Information

BT USB A F R \* B A 1 B49

USB A Type      F: Female      R: Right Angle      Contact Plating      Color Insulator  
 F=Gold Flash/Tin      B=Black  
 A=10u"Gold/Tin      W=White  
 J=5u"Gold/Tin  
 K=30u"Gold/Tin



REV	DATE	MODIFICATION DESCRIPTION	CHANGE	APPROVE	OPERATION		DRAW	Fanyi jin	09/02/16	SCALE		SHEET	PART NO.	TITLE:
					XX	±0.40				UNIT	PROJ.			
					XXX	±0.30	DESIGN			mm	1/1		BTA	BMA TECHNOLOGIES LTD
					XXX	±0.10	CHECK	Bill		A4			BTUSBAF*BA1B49	
A0	09/02/16	NEW			Angle	±.3	APPROVE	Bill					USB AF 90?? DIP RIGHT ANGLE L=13.80(Ref)	
					DIM	TOL								



BMA TECHNOLOGIES LTD